

EL-IP-OTF2-SS



ELAN

IP Outdoor Fixed Lens Turret Camera with IR



EL-IP-OTF2-SS

AUTO DISCOVER CONFIGURE **TURRET** **OUTDOOR/INDOOR** **FIXED** **2MP** **SS**

Rugged Performer.

The ELAN EL-IP-OTF2-SS performs in challenging environments in which standard cameras are not an option. With its stainless steel construction, IP66 Weather Resistance and SUS316 Corrosion Resistance ratings, the EL-IP-OTF2-SS is the right choice for beach house, watercraft or even industrial installations.

The turret form factor of the EL-IP-OTF2-SS delivers distortion-free video and superior IR images with no IR bounce.

The EL-IP-OTF2-SS turret camera is quick and easy to install, and has greater flexibility in terms of placement compared to dome cameras—it can be either ceiling mounted or wall mounted.

ELAN Discovery

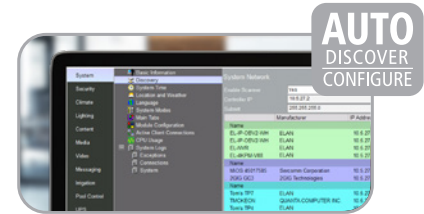
Like all other ELAN Surveillance products, the ELAN EL-IP-OTF2-SS is embedded with the ELAN beacon, making it effortless to install in an ELAN system.

In the Configurator, ELAN Discovery scans your network, both wired and wireless, automatically discovering the SSIDs of available devices. With a click, the camera is configured and installed in the ELAN system. We've eliminated the need to use a secondary application to setup the device outside of ELAN—saving you substantial time on every surveillance installation.

The EL-IP-OTF2-SS has the quality, reliability, best-in-class features and ELAN customer support that you and your clients rely on.

Comprehensive Surveillance

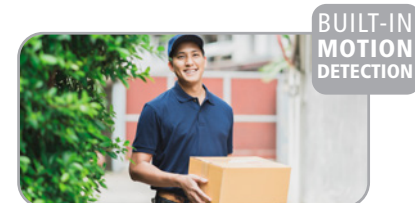
ELAN Surveillance cameras work seamlessly with the ELAN Network Video Recorder (EL-NVR Series) to create a surveillance ecosystem that excels in every application.



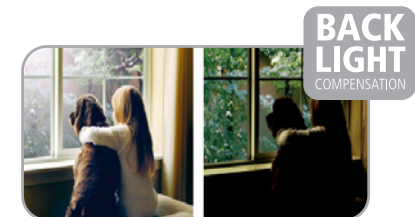
ELAN surveillance cameras feature one-click camera setup with ELAN Discovery.



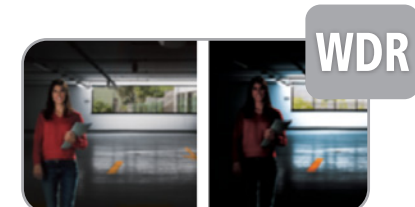
Illumination from Infrared (IR) LEDs enables night vision up to 16 meters.



Motion in front of the camera will be detected and saved as an event.



Back Light Compensation adjusts the exposure of the image to properly expose the subject of interest.



Wide Dynamic Range improves image quality by balancing dark and light areas in an image.

EL-IP-OTF2-SS

IP Outdoor Fixed Lens Stainless Steel Turret Camera with IR



ORDER NO. EL-IP-OTF2-SS



FEATURES

- Auto-Discover/Auto-Configure
- 2 Megapixel
- High Dynamic Range (HDR)
- 16m IR Distance
- 4mm Fixed Lens
- Advanced Built-in Motion Analytics
- IP66 Weather Resistant
- SUS316 Corrosion Resistant
- Micro SD Card Slot
- Alarm In/Out
- 2-Way Audio Support
- Automatic Gain Control (AGC)
- Operating Temperature: -13°F – 122°F
- Max Frame Rate: 30FPS @ 1920x1080
- 3D Digital Noise Reduction
- 2D Wide Dynamic Range
- Power Over Ethernet (PoE)

INCLUDED IN THE BOX:

- (1) Camera
- (1) Quick Installation Guide
- (1) Mounting Template
- (3) Mounting Hardware
- (1) Allen Wrench

SPECIFICATIONS	
Power Consumption	DC12V, 7.5W / PoE, 8.5W (IEEE 802.3af)
Dimensions	2.6" x 2.3"
Weight	24.7 oz
Operating Temperature	-13°F – +122°F (-25°C – +50°C)
Angle of View	94°(H), 50°(V), 102°(D)
IR Range	16m
Alarm Event Triggers	Motion/Tamper/Network lost detection
Alarm Event Actions	FTP, SMTP, HTTP post, SD card, SAMBA
SD Card Recording	Support Micro SD/SDHC/SDXC (up to 128GB) card for circular recording (card is not included)
CPU Memory	Embedded SoC ARM Cortex-A9, 600MHz, 256MB DDR3, 256MB flash memory
Certifications	CE: Class B, FCC: Class B, IP66 Weather Resistant, SUS316 Corrosion Resistant

VIDEO	
Video compression	Smart H.264/ H.264 High/Main Profile, Motion JPEG
Maximum Frame Rate	H.264 and MJPEG: : up to 30 FPS @ 1920 x 1080
Day/Night (IR-cut filter)	Color (Day), Monochrome (Night), Auto, Schedule
Scanning system	Progressive scan
Back Light Compensation	On / Off
2D WDR	Off / Auto / x2 / x3 / x4
3D Noise Reduction	Off / 1 to 32 selectable
Privacy Masking	Off / On (4 independent areas)
Sense Up	Off / 1 frame / 2 frames
Sense Up+	Yes
Auto Gain Control	42 dB variable gain
Other Functions	Sharpness, Hue, Image flip, Image mirror

NETWORK	
Ethernet	10Base-T / 100Base-TX, RJ-45
On-Screen Display (OSD)	Text over date, time, and camera name
Protocols	IPv4, IPv6, TCP, UDP, HTTP, HTTPS, SMTP, MQTT, QoS, SNMP , SNMP Trap, NTP, DDNS, UPnP, FTP, ARP, DHCP, PPPoE, DNS, RTSP, RTCP, Telnet, ICMP, IGMP, SDDP, Bonjour
Multi IP Addresses	Yes



elancontrolsystems.com